



Plate Lunches

(Served During Lunch and Dinner)

PLATE LUNCHES

(Plates include 2 scoops of rice and 1 scoop of MAC. salad)

- SERVE ALL DAY -

- C. B.B.Q. Mixed Plate**..... \$8.95
B.B.Q. Short Ribs, B.B.Q. Chicken and Teriyaki Steak.
- D. Loco Moco** \$7.95
Hamburger Steak and Eggs with Gravy.
- E. Seafood Combo**..... \$9.25
Mahi Mahi and Deep Fried Shrimp with one choice of
(1) B.B.Q. Short Ribs
(2) B.B.Q. Chicken or
(3) Teriyaki Steak

- F. Bento**..... \$8.95
Mahi Mahi, Teriyaki Steak, B.B.Q. Chicken and Ham.

- G. Steam Broccoli w/ one choice of...** \$8.95
B.B.Q. Chicken, Teriyaki Steak OR Chicken Katsu.

REGULAR PLATES

(Plates include 2 scoops of rice and 1 scoop of MAC. salad)

- B.B.Q. Chicken..... \$7.95
Lemon Chicken..... \$7.95
Chicken Katsu \$7.95
Chicken Cutlet..... \$7.95
Hamburger Steak..... \$7.95
Teriyaki Steak..... \$7.95
Teriyaki Pork Chops..... \$7.95
B.B.Q. Short Ribs..... \$8.95
Deep Fried Shrimp \$7.95
Mahi Mahi (Fish) \$7.95
Garlic Shrimp..... \$7.95
Kalua Pig..... \$7.95
Fresh Pork Lau Lau \$7.95

MINI PLATES

(Plates include 1 scoop of rice and 1 scoop of MAC. salad)

- B.B.Q. Chicken..... \$5.95
Lemon Chicken..... \$5.95
Chicken Katsu \$5.95
Chicken Cutlet..... \$5.95
Beef Curry..... \$5.95
Teriyaki Steak..... \$5.95
Teriyaki Pork Chop..... \$5.95
B.B.Q. Short Ribs..... \$6.80
Hamburger Steak..... \$5.95
Deep Fried Shrimp (4 Pcs.)..... \$5.95
Mahi Mahi (Fish)..... \$5.95
Kalua Pig..... \$5.95

SANDWICHES

- Hamburger..... \$2.15
Cheesburger..... \$2.25
Double Cheeseburger..... \$3.25
Teriyaki Beef Sandwich \$2.95
B.B.Q. Chicken Sandwich..... \$2.95
Mahi Mahi Sandwich..... \$2.95
French Fries Small..... \$2.15
French Fries Large..... \$2.35

BREAKFAST

- SERVE ALL DAY -

- Portugues Sausage and
Eggs w/Rice..... \$5.95
Spam and Eggs w/Rice..... \$5.95

MUSUBI

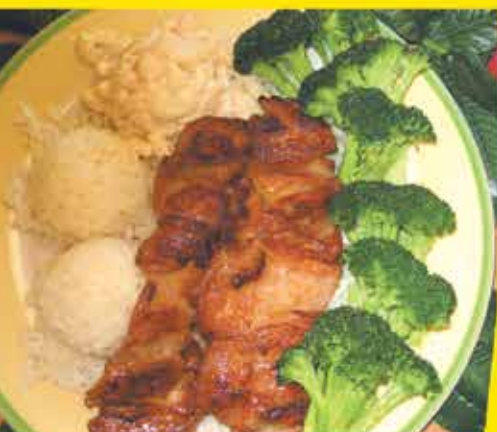
- Spam (1 pc)..... \$1.80
Chicken Katsu (1 pc)..... \$1.80
B.B.Q. Chicken (1 pc)..... \$1.80



B.B.Q. Chicken



B.B.Q. Mixed Plate



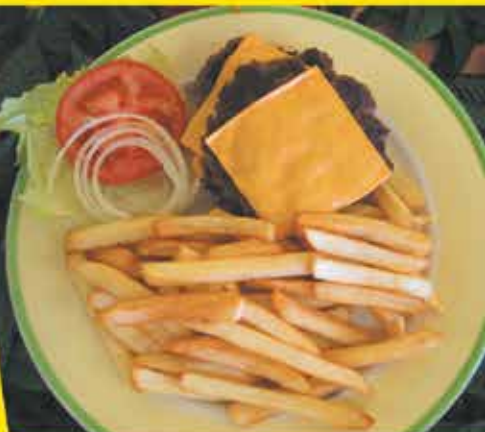
B.B.Q. Chicken with Broccoli



Chicken Katsu



Seafood Combo with Short Rib



Double Cheese Burger
French Fries

SAIMIN-NOODLE SOUP

Saimin	\$3.50
Teriyaki Steak Saimin	\$4.65
B.B.Q. Chicken Saimin	\$4.65
Aloha Saimin	\$5.50
(Egg & B.B.Q. Chicken)	

SIDE ORDER

Pot Sticker(7 pcs).....	\$3.50
Kim Chee	\$2.99
Green Salad.....	\$3.50
Mahi Mahi (1 pc).....	\$1.20
Deep Fried Shrimp (1 pc).....	\$1.00

DRINKS

S \$1.00 M \$1.60 L \$1.95

Hawaiian Sun (Can)	\$1.25 Each
--------------------------	-------------

HAWAIIAN DRIVE INN. PARTY PAK'S

(We also serve uncooked meat and
MUSUBI in party tray as well.)

Chicken Katsu		
Small Pan	\$29.99	(12-13 pieces, 5 People)
Med. Pan	\$45.99	(20-21 pieces, 10 People)
Large Pan	\$75.99	(38-40 pieces, 20 People)
Teriyaki Chicken		
Small Pan	\$29.99	(12-13 pieces, 5 People)
Med. Pan	\$45.99	(20-21 pieces, 10 People)
Large Pan	\$75.99	(40-42 pieces, 20 People)
Teriyaki Short Ribs or Teriyaki Steak		
Small Pan	\$49.99	(14-16 pieces, 5 People)
Med. Pan	\$79.99	(25-28 pieces, 10 People)
Large Pan	\$139.99	(50-52 pieces, 25 People)
Macaroni Salad		
Small Pan	\$20.99	(22 Scoops, 10 People)
Med. Pan	\$30.99	(32 Scoops, 15 People)
Large Pan	\$40.99	(45 Scoops, 20 People)
Kalua Pig		
Small Pan	\$52.99	(10 People)
Med. Pan	\$102.99	(20 People)
Large Pan	\$152.99	(35 People)
Mahi Mahi or Shrimp		
Small Pan	\$26.00	(20 pieces, 5 People)
Med. Pan	\$41.00	(35 pieces, 10 People)
Large Pan	\$57.00	(50 pieces, 20 People)

HAWAIIAN DRIVE INN. #28

The Best Hawaiian Style Plate Lunches



**Take Out Orders
Welcome**

Business Hours: Mon ~ Sun: 10:00 am ~ 9:00 pm

**2600 San Bruno Ave.
San Francisco, CA 94134**

Tel: (415) 656-0998



www.hawaiiandriveinn.com