



# Plate Lunches

(Served During Lunch and Dinner)

## PLATE LUNCHES

(Plates include 2 scoops of rice and 1 scoop of MAC. salad)

- SERVE ALL DAY -

**C. B.B.Q. Mixed Plate**..... \$15.45  
B.B.Q. Short Ribs, B.B.Q. Chicken and Teriyaki Steak.

**D. Loco Moco** ..... \$13.45  
Hamburger Steak and Eggs with Gravy.

**E. Seafood Combo**..... \$15.45  
Fried Fish and Deep Fried Shrimp with one choice of  
(1) B.B.Q. Short Ribs  
(2) B.B.Q. Chicken  
(3) Teriyaki Steak **or**  
(4) Chicken Katsu

**F. Bento**..... \$14.45  
Fried Fish, Teriyaki Steak, B.B.Q. Chicken and Spam.

**G. Steam Broccoli w/ one choice of**, \$13.45  
B.B.Q. Chicken, Teriyaki Steak **OR** Chicken Katsu.

## REGULAR PLATES

(Plates include 2 scoops of rice and 1 scoop of MAC. salad)

B.B.Q. Chicken..... \$13.45  
Chicken Katsu ..... \$13.45  
Chicken Cutlet..... \$13.45  
Hamburger Steak..... \$13.45  
Teriyaki Steak..... \$14.95  
Teriyaki Pork Chops..... \$13.45  
B.B.Q. Short Ribs..... \$16.75  
Deep Fried Shrimp ..... \$13.45  
Fried Fish ..... \$13.45  
Garlic Shrimp..... \$13.45  
Kalua Pig..... \$13.45  
Fresh Pork Lau Lau ..... \$13.45

## MINI PLATES

(Plates include 1 scoop of rice and 1 scoop of MAC. salad)

B.B.Q. Chicken..... \$10.95  
Chicken Katsu ..... \$10.95  
Chicken Cutlet..... \$10.95  
Teriyaki Steak..... \$11.95  
Teriyaki Pork Chop..... \$10.95  
B.B.Q. Short Ribs..... \$13.45  
Hamburger Steak..... \$10.95  
Deep Fried Shrimp (4 Pcs.)..... \$10.95  
Fried Fish..... \$10.95  
Kalua Pig..... \$10.95

## SANDWICHES

Hamburger..... \$3.45  
Cheesburger..... \$3.75  
Double Cheeseburger..... \$4.75  
Teriyaki Beef Sandwich ..... \$4.25  
Fried Fish Sandwich..... \$3.95  
French Fries Small..... \$3.45  
French Fries Large..... \$3.75

## BREAKFAST

- SERVE ALL DAY -

Portugues Sausage and  
Eggs w/Rice..... \$8.95  
Spam and Eggs w/Rice..... \$8.95

## MUSUBI

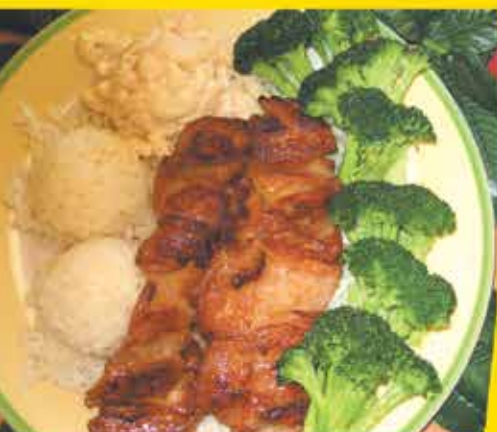
Spam (1 pc)..... \$2.30  
Chicken Katsu (1 pc)..... \$2.30  
B.B.Q. Chicken (1 pc)..... \$2.30



*B.B.Q. Chicken*



*B.B.Q. Mixed Plate*



*B.B.Q. Chicken with Broccoli*



*Chicken Katsu*



*Seafood Combo with Short Rib*



*Double Cheese Burger  
French Fries*

## SAIMIN-NOODLE SOUP

Spam Saimin .....	\$5.50
Teriyaki Steak Saimin .....	\$7.50
B.B.Q. Chicken Saimin .....	\$7.50
Aloha Saimin ( Egg & B.B.Q. Chicken ).....	\$8.50

## SIDE ORDER

BBQ Chicken (1pc).....	\$3.75
BBQ Short Rib (1pc).....	\$4.95
Teriyaki Steak (1pc).....	\$3.95
Spam (1pc) .....	\$1.95
Fried Fish (1 pc).....	\$2.75
Deep Fried Shrimp (1 pc).....	\$1.50
Macaroni Salad (1 scoop).....	\$1.50
Steamed Rice (1 scoop).....	\$1.00
Extra Sauce (each) .....	\$0.50

## DRINKS

Hawaiian Sun (Can) .....	\$1.85 Each
--------------------------	-------------

## **HAWAIIAN DRIVE INN. PARTY PAK'S**

(We also serve uncooked meat and MUSUBI in party tray as well.)

<b>Chicken Katsu</b>		
Small Pan	\$39.99	(12-13 pieces, 5 People)
Med. Pan	\$60.99	(20-21 pieces, 10 People)
Large Pan	\$95.99	(38-40 pieces, 20 People)
<b>BBQ Chicken</b>		
Small Pan	\$39.99	(12-13 pieces, 5 People)
Med. Pan	\$60.99	(20-21 pieces, 10 People)
Large Pan	\$95.99	(40-42 pieces, 20 People)
<b>BBQ Short Ribs or Teriyaki Steak</b>		
Small Pan	\$59.99	(14-16 pieces, 5 People)
Med. Pan	\$99.99	(25-28 pieces, 10 People)
Large Pan	\$179.99	(50-52 pieces, 25 People)
<b>Macaroni Salad</b>		
Small Pan	\$30.99	(22 Scoops, 10 People)
Med. Pan	\$45.99	(32 Scoops, 15 People)
Large Pan	\$60.99	(45 Scoops, 20 People)
<b>Kalua Pork</b>		
Small Pan	\$62.99	(10 People)
Med. Pan	\$117.99	(20 People)
Large Pan	\$172.99	(35 People)
<b>Mahi Mahi or Shrimp</b>		
Small Pan	\$55.00	(20 pieces, 5 People)
Med. Pan	\$95.00	(35 pieces, 10 People)
Large Pan	\$135.00	(50 pieces, 20 People)

# HAWAIIAN DRIVE INN. #28

The Best Hawaiian Style Plate Lunches



**Take Out Orders  
Welcome**

**Business Hours: Mon ~ Sun: 10:30 am ~ 8:00 pm**

**1803 Monument Blvd., #E  
Concord, CA, 94520**

**Tel: (925) 822-3298**



[www.hawaiiandriveinn.com](http://www.hawaiiandriveinn.com)